



Bureau of Plant Industry  
**OPERATIONAL PROCEDURES**

Document No.: BPI-QMS-BIOTECH-OP12

Preparation Date: June 14, 2024

Revision No.: 0

Page 1 of 6

Operating Unit: BIOTECHNOLOGY OFFICE

Subject: OPERATIONALIZATION OF THE MONITORING OF IMPORTED AGRICULTURAL PLANTS, PLANTING MATERIALS, AND PLANT PRODUCTS FOR THE PRESENCE OF UNAPPROVED TRANSFORMATION EVENTS

### 1.0 Objective

To conduct the monitoring of imported agricultural plants, planting materials, and plant products for the presence of unapproved transformation events without safety assessment under the Philippine Biosafety regulations.


### 2.0 Scope

This procedure starts from the sampling of imported agricultural plants, planting materials, and plant products to the endorsement of the laboratory results and narrative reports.

### 3.0 Definition of Terms

Approval registry	Refers to the regulatory approval database containing the list of approved genetically modified (GM) transformation events. Only GM events listed in the Approval Registry for Commercial Propagation or Direct Use shall be allowed to be imported into the country.
Convenient sampling	Involves selecting the most convenient units from the lot, without selecting units in a random or systematic manner. (ISPM 31)
Commodity	Refers to any good or product that is bought and sold in bulk quantities which may be subjected to specific regulations and tariffs imposed by importing countries.
Composite sample	Refers to the combination of the primary samples collected per consignment.
Consignment	Refers to a quantity of plants, plant products or other articles being moved from one country to another and covered, when required, by a single phytosanitary certificate
Event-specific qPCR analysis	Refers to a method of quantitative polymerase chain reaction (qPCR) used to identify and quantify a genetically modified organism (GMO) based on the presence of the transformation event.
GM/Non GM Declaration	Refers to a document specifying whether the consignment is GM or non-GM; if declared as GM, the document shall specify the crop and transformation events.
International Seed Testing Association (ISTA) protocol	Refers to a set of guidelines and protocols established by the ISTA for the proper collection and handling of seed samples for testing purposes. These procedures are designed to ensure accuracy, consistency, and reliability in seed testing results across different laboratories and locations worldwide.

Prepared by:   
ERICKA JOY U. ANCAYAN  
SRT III, Biotechnology Office

Approved by:   
GERONIMA P. EUSEBIO  
OIC-Head, Biotechnology Office  
Date Signed: JULY 1, 2024



Bureau of Plant Industry  
**OPERATIONAL PROCEDURES**

Document No.: BPI-QMS-BIOTECH-OP12

Preparation Date: June 14, 2024

Revision No.: 0

Page 2 of 6

Operating Unit: BIOTECHNOLOGY OFFICE

Subject: OPERATIONALIZATION OF THE MONITORING OF IMPORTED AGRICULTURAL PLANTS, PLANTING MATERIALS, AND PLANT PRODUCTS FOR THE PRESENCE OF UNAPPROVED TRANSFORMATION EVENTS

Molecular-based detection method	Refers to an approach that utilizes the techniques of molecular biology to isolate and characterize the gene of interest from a specific organism or tissue.
Protein-based detection method	Involves using lateral flow immunoassay strips to detect the absence or presence of target proteins in a given sample.
Primary sample	A portion taken from the consignment during one single sampling action.
Sanitary and Phytosanitary Import Clearance (SPSIC)	A requirement for the importation of certain goods issued to ensure the safety and quality of imported goods, particularly food and agricultural products.
Transformation events	Refers to the uptake and integration of specific sequences of DNA in the genome of the host organism in which the introduced DNA is intended to change the phenotype of the recipient organism in a predictable manner.

**4.0 Procedure Details**

FLOWCHART FOR THE MONITORING OF IMPORTED AGRICULTURAL PLANS AND PLANT PRODUCTS FOR THE PRESENCE OF UNAPPROVED TRANSFORMATION EVENTS	RESPONSIBLE PERSON/UNIT	DETAILED PROCESS
<pre> graph TD     Start([START]) --&gt; Box[Coordinate and finalize the imported agricultural plant, planting materials, and plant products for sampling]     Box --&gt; A((A))           </pre>	<p>Biotechnology Office</p> <p>Plant Quarantine Services Station</p>	<p>The Biotechnology Office shall coordinate with the Plant Quarantine Stations (PQS) on major ports of entry for any incoming consignment(s) of imported agricultural plants, planting materials, and plant products with GM counterparts. Plant Quarantine (PQ) Officers shall coordinate with the Biotechnology Office for the sampling schedule and the commodities to be collected considering the following conditions:</p> <ul style="list-style-type: none"> <li>• Consignments declared as Non-GM shall be automatically collected.</li> <li>• Consignments declared as "GM" however, the transformation event(s) indicated in the GM</li> </ul>

Prepared by: *ERICKA JOY G. ANCAYAN*  
SRT III, Biotechnology Office

Approved by: *GERONIMA P. EUSEBIO*  
OIC-Head, Biotechnology Office  
Date Signed: JULY 1, 2024



Bureau of Plant Industry  
**OPERATIONAL PROCEDURES**

Document No.: BPI-QMS-BIOTECH-OP12

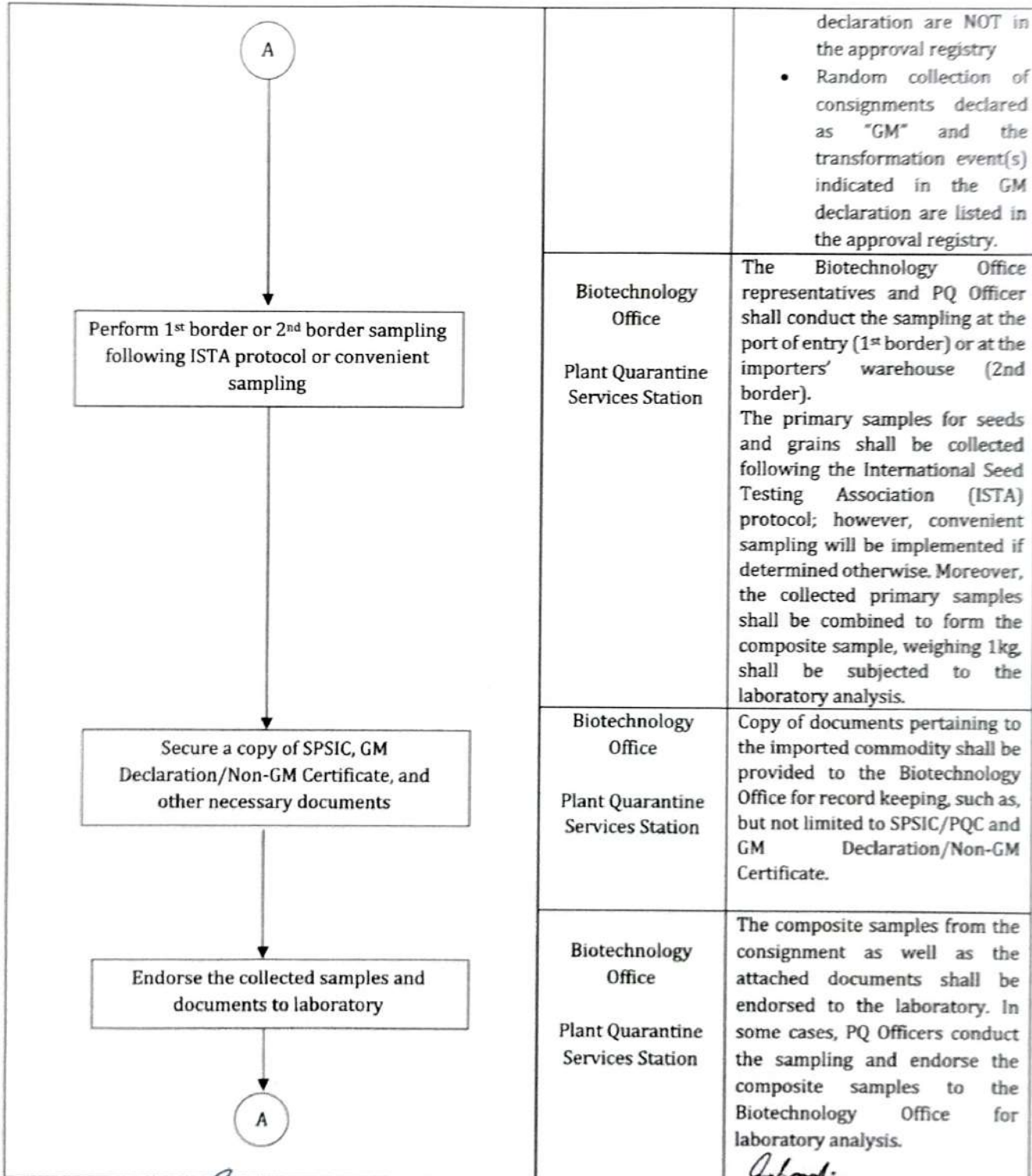
Preparation Date: June 14, 2024

Revision No.: 0

Page 3 of 6

Operating Unit: BIOTECHNOLOGY OFFICE

Subject: OPERATIONALIZATION OF THE MONITORING OF IMPORTED AGRICULTURAL PLANTS, PLANTING MATERIALS, AND PLANT PRODUCTS FOR THE PRESENCE OF UNAPPROVED TRANSFORMATION EVENTS



Prepared by: *Ericka Joy B. Ancayan*  
ERICKA JOY B. ANCAYAN  
SRT III, Biotechnology Office

Approved by: *Geronima P. Eusebio*  
GERONIMA P. EUSEBIO  
OIC-Head, Biotechnology Office  
Date Signed: *July 1, 2024*  
JULY 1, 2024



Bureau of Plant Industry  
**OPERATIONAL PROCEDURES**

Document No.: BPI-QMS-BIOTECH-OP12

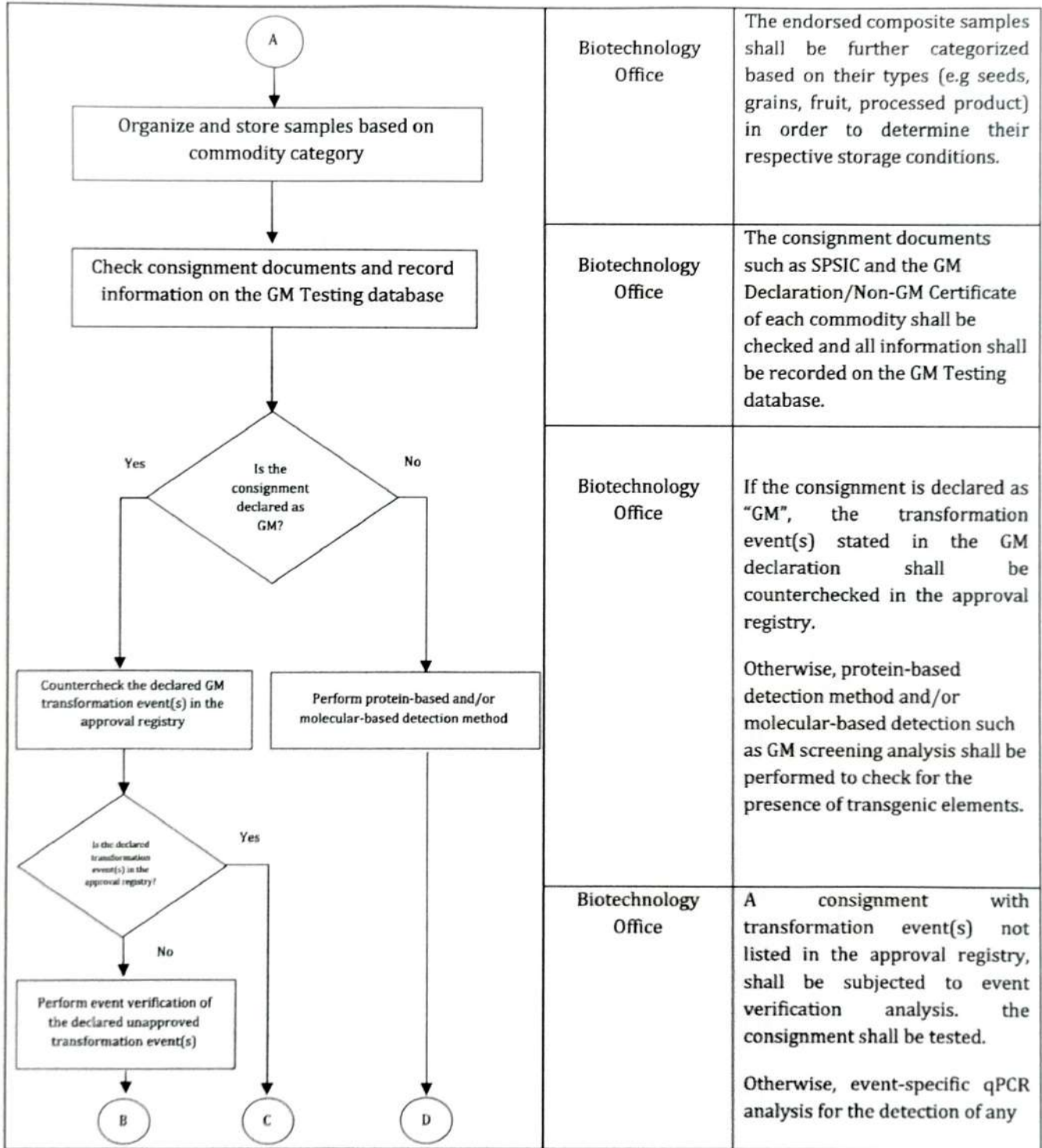
Preparation Date: June 14, 2024

Revision No.: 0

Page 4 of 6

Operating Unit: BIOTECHNOLOGY OFFICE

Subject: OPERATIONALIZATION OF THE MONITORING OF IMPORTED AGRICULTURAL PLANTS, PLANTING MATERIALS, AND PLANT PRODUCTS FOR THE PRESENCE OF UNAPPROVED TRANSFORMATION EVENTS



Biotechnology Office

The endorsed composite samples shall be further categorized based on their types (e.g seeds, grains, fruit, processed product) in order to determine their respective storage conditions.

Biotechnology Office

The consignment documents such as SPSIC and the GM Declaration/Non-GM Certificate of each commodity shall be checked and all information shall be recorded on the GM Testing database.

Biotechnology Office

If the consignment is declared as "GM", the transformation event(s) stated in the GM declaration shall be counterchecked in the approval registry.

Otherwise, protein-based detection method and/or molecular-based detection such as GM screening analysis shall be performed to check for the presence of transgenic elements.

Biotechnology Office

A consignment with transformation event(s) not listed in the approval registry, shall be subjected to event verification analysis. the consignment shall be tested.

Otherwise, event-specific qPCR analysis for the detection of any

Prepared by: **ERICKA JOY B. ANCAYAN**  
SRT III, Biotechnology Office

Approved by: **GERONIMA P. EUSEBIO**  
OIC-Head, Biotechnology Office  
Date Signed: **JULY 1, 2024**



Bureau of Plant Industry  
**OPERATIONAL PROCEDURES**

Document No.: BPI-QMS-BIOTECH-OP12

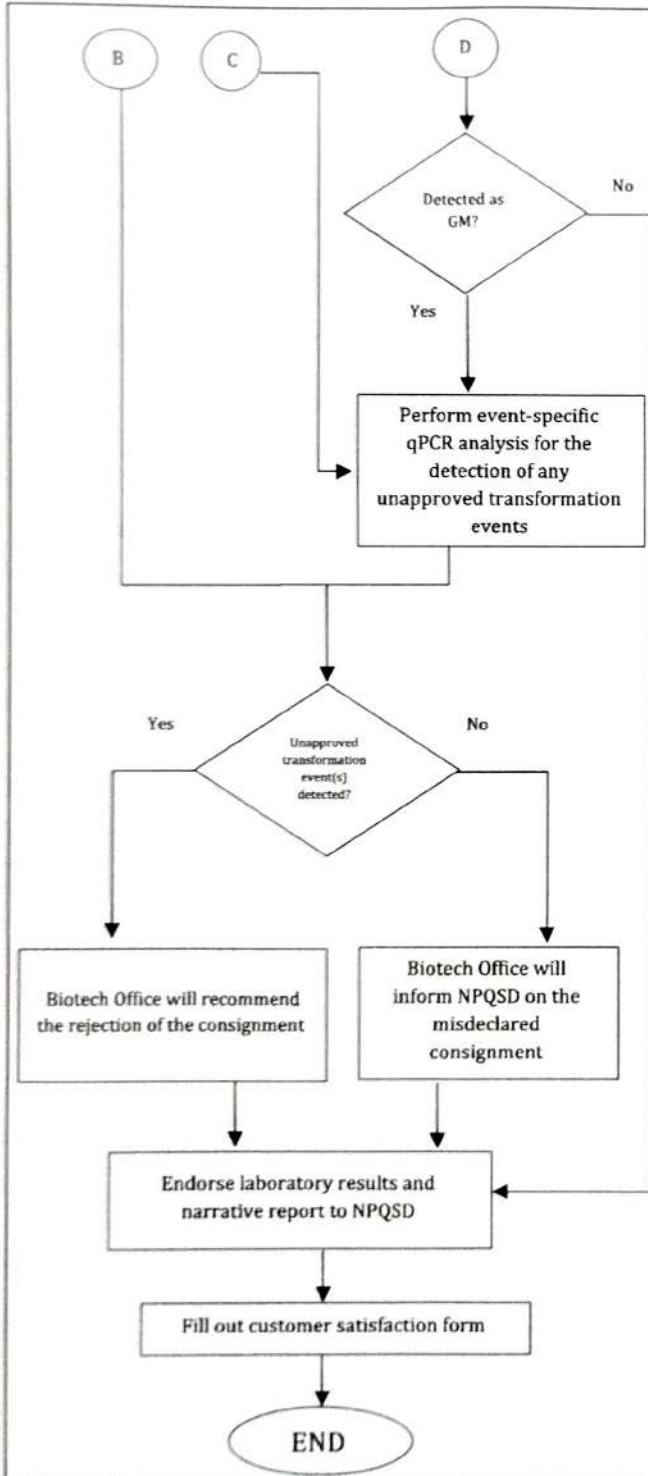
Preparation Date: June 14, 2024

Revision No.: 0

Page 5 of 6

Operating Unit: BIOTECHNOLOGY OFFICE

Subject: OPERATIONALIZATION OF THE MONITORING OF IMPORTED AGRICULTURAL PLANTS, PLANTING MATERIALS, AND PLANT PRODUCTS FOR THE PRESENCE OF UNAPPROVED TRANSFORMATION EVENTS



unapproved GM events per commodity shall be performed.

Biotechnology Office

If the consignment is detected with transgenic elements, the consignment shall be further subjected to event-specific qPCR analysis for the detection of any unapproved GM events.

Otherwise, no action is required from the Biotech office and the results and narrative report shall be endorsed to the PQS Station.

Biotechnology Office  
National Plant Quarantine Services Division (NPQSD)

If the unapproved transformation event(s) was detected, the Biotech Office will recommend the rejection of the consignment. The importers shall be advised to submit their proposed corrective action for the management and handling of consignment with detection of unapproved GM event(s).

Otherwise, the Biotechnology Office shall inform the NPQSD on the misdeclared consignment for appropriate action.

Fill out customer satisfaction form.

Prepared by: *Ericca Joy G. Ancayan*  
ERICKA JOY G. ANCAYAN  
SRT III, Biotechnology Office

Approved by: *Geronima P. Eusebio*  
GERONIMA P. EUSEBIO  
OIC-Head, Biotechnology Office  
Date Signed: JULY 1, 2024



Bureau of Plant Industry  
**OPERATIONAL PROCEDURES**

**Document No.:** BPI-QMS-BIOTECH-OP12

**Preparation Date:** June 14, 2024

**Revision No.:** 0

Page 6 of 6

**Operating Unit:** BIOTECHNOLOGY OFFICE

**Subject:** OPERATIONALIZATION OF THE MONITORING OF IMPORTED AGRICULTURAL PLANTS, PLANTING MATERIALS, AND PLANT PRODUCTS FOR THE PRESENCE OF UNAPPROVED TRANSFORMATION EVENTS

**5.0 Forms Used and Records Generated**

Laboratory Request Form  
Laboratory Analysis Result

**6.0 References**

Article IX. Importation of Regulated Articles of the DOST-DA-DENR-DOH-DILG Joint Department Circular No. 01, s2021 (JDC No. 01 s2021)

**7.0 Effectivity**

The effectivity date of this document shall be five (5) working days after the approval by the authorized signatory.



*Ericka Joyu Ancayan*  
**Prepared by: ERICKA JOYU. ANCAYAN**  
SRT III, Biotechnology Office

*Geronima P. Eusebio*  
**Approved by: GERONIMA P. EUSEBIO**  
OIC-Head, Biotechnology Office  
**Date Signed: JULY 1, 2024**